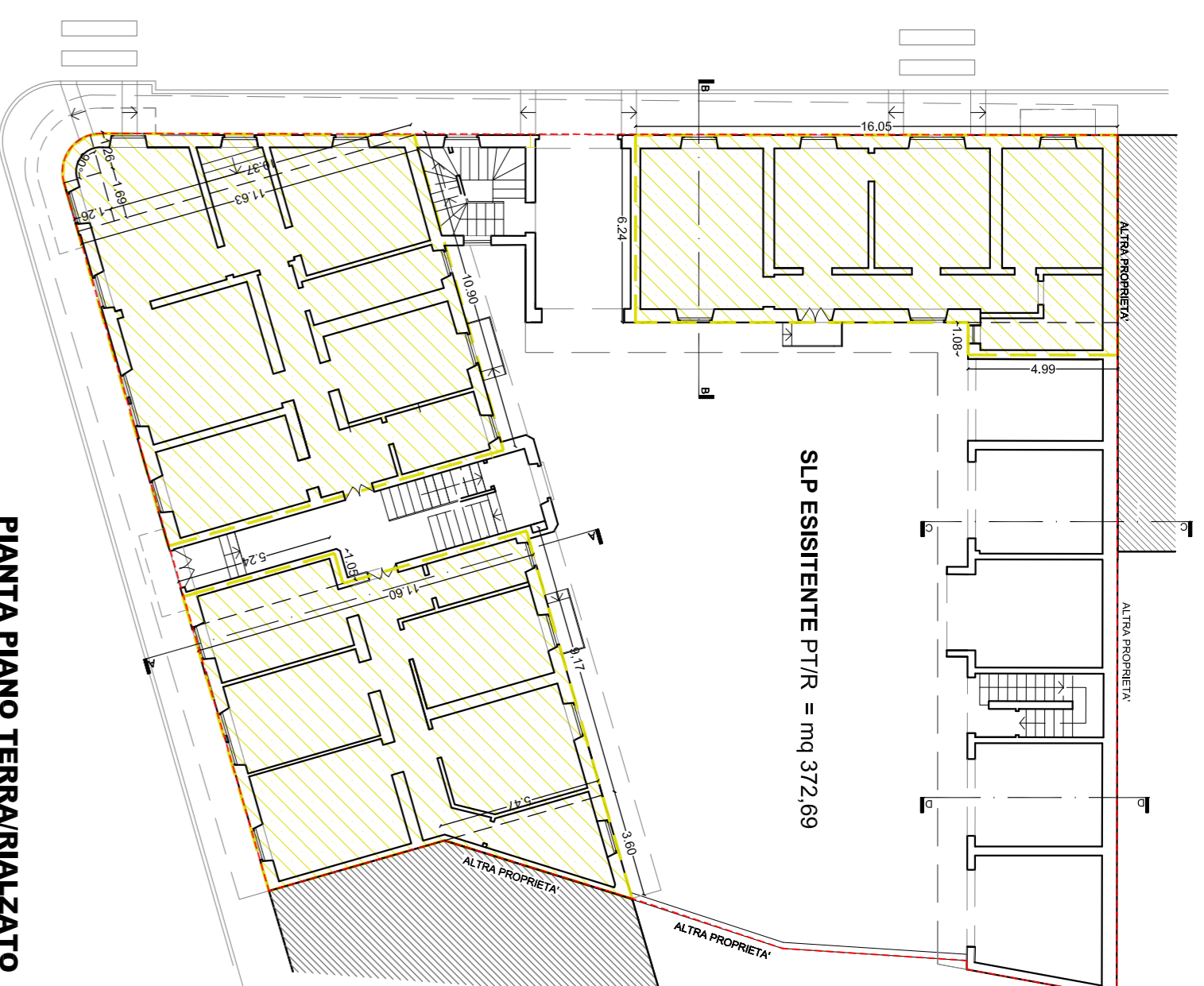


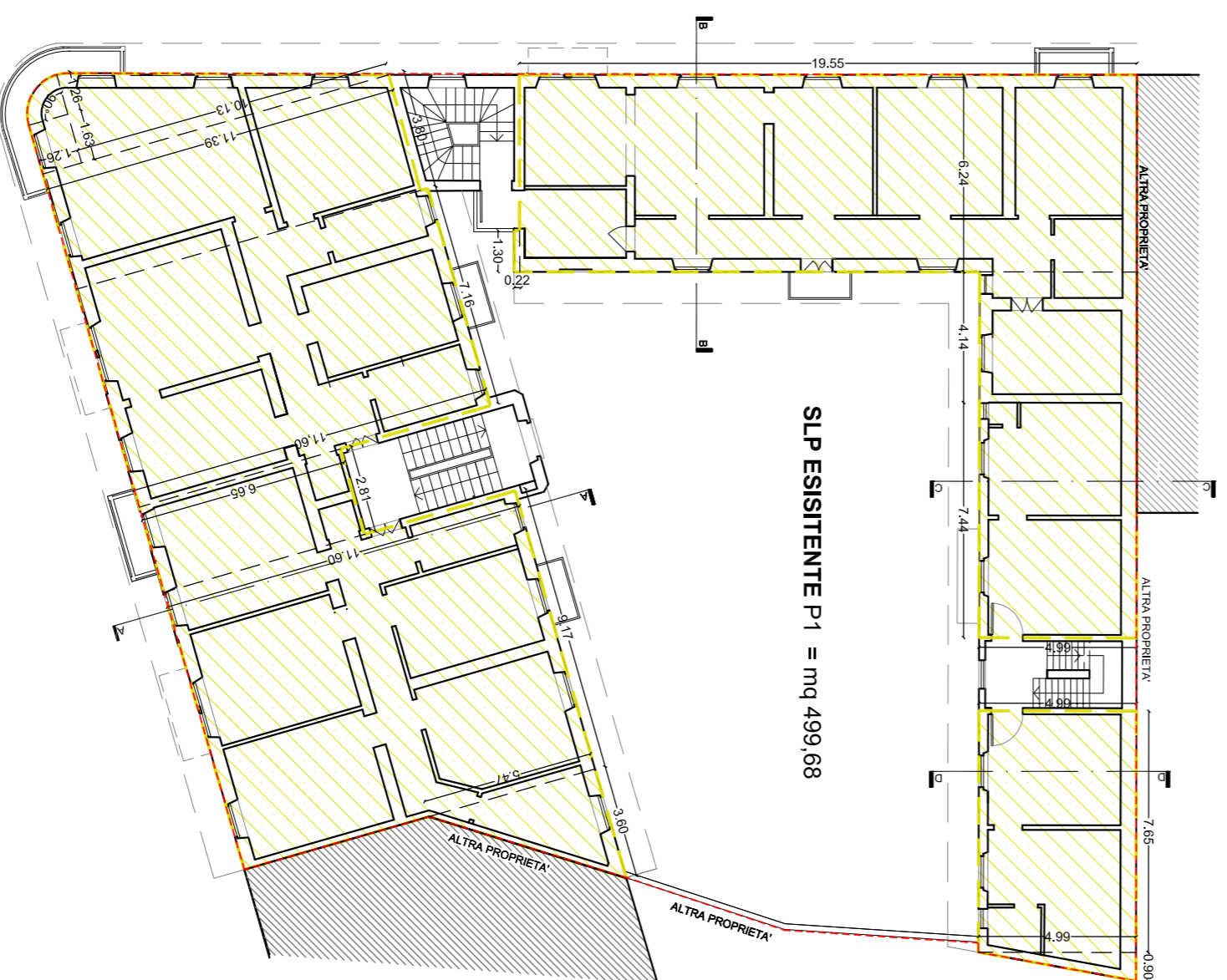
PIANTA PIANO INTERRATO



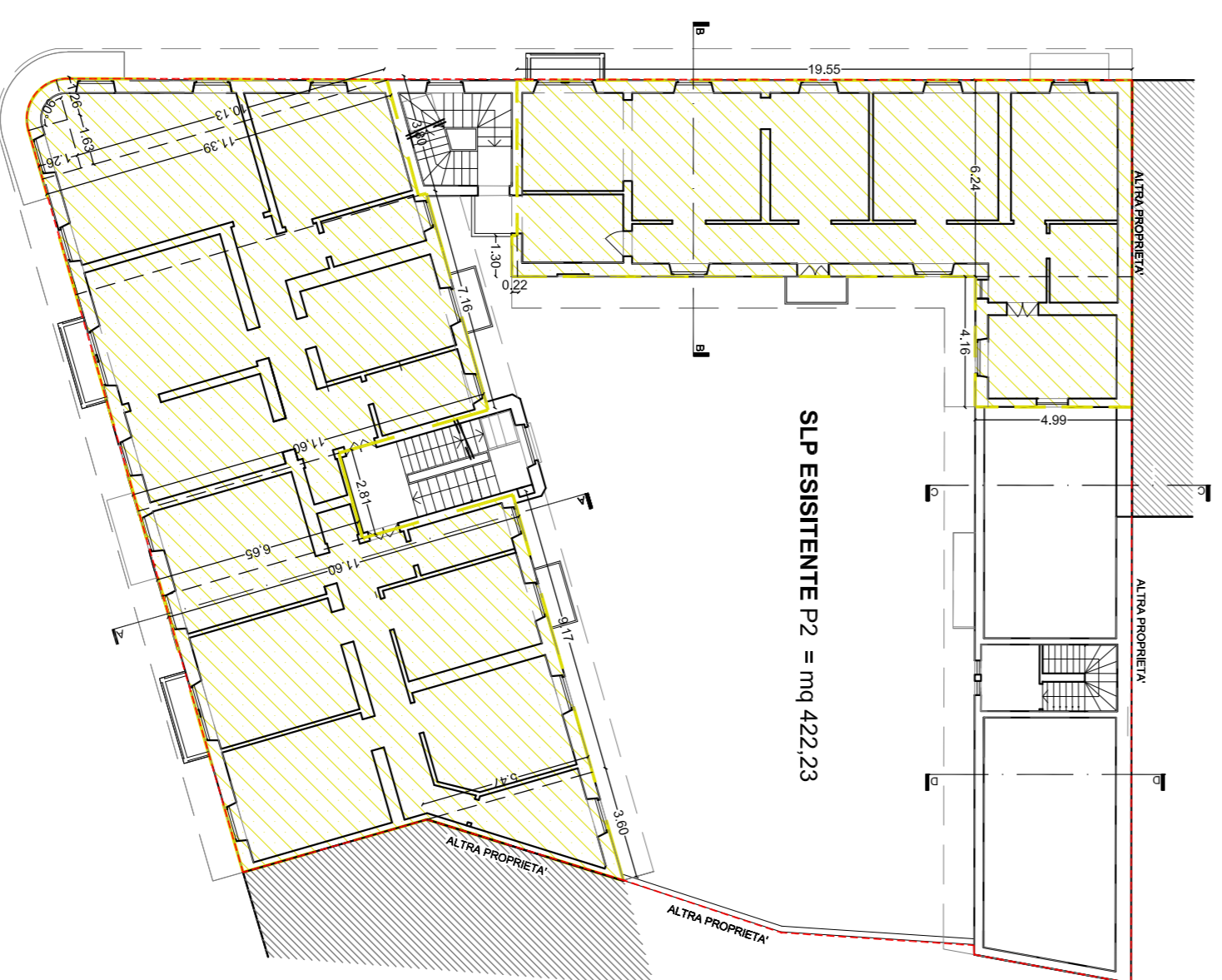
PIANTA PIANO TERRA/RALZATO

LEGENDA:		SUPERFICIE LOTTO	
	CANTINE	MAPPALI 106 E 107:	
	SLP ESISTENTE	TOT. = mq 826,97	
	SUPERFICIE LOTTO	SLP ESISTENTE:	
		PT/R = mq 372,69	
		P1 = mq 499,68	
		P2 = mq 422,23	
		TOT. = mq 1.294,60	

VERIFICA SLP ESISTENTE
= (4,99m ² *1,08m) + (6,24m ² *16,05m) + (9,17m ² *11,60m) + (3,60m ² *5,47m)/2 + (1,05m ² *5,24m) + (10,90m ² *11,63m) + (2,99m ² *10,37m)/2 + (1,89m ² *1,26m) + [3,14*(1,26m) ² *(90/360)] =
= 5,39mq + 100,15mq + 106,37mq + 9,84mq + 5,50mq + 126,77mq + 15,30mq + 2,13mq + 1,24mq =
= 372,69 mq



PIANTA PIANO PRIMO



PIANTA PIANO SECONDO

VERIFICA SLP ESISTENTE
= (7,65m ² *4,99m) + (0,90m ² *4,99m)/2 + (11,58m ² *4,99m) + (6,24m ² *19,55m) + (1,30m ² *0,22m) + (3,60m ² *5,47m)/2 + (9,17m ² *11,60m) + (2,81m ² *6,65m) + (7,16m ² *11,60m) + (3,80m ² *11,39m) + (2,89m ² *10,13m)/2 + (1,63m ² *1,26m) + [3,14*(1,26m) ² *(90/360)] =
= 38,17mq + 2,25mq + 57,79mq + 121,99mq + 0,29mq + 9,85mq + 106,37mq + 18,69mq + 83,06mq + 43,28mq + 14,64mq + 2,06mq + 1,24mq =
= 499,68 mq

VERIFICA SLP ESISTENTE
= (4,16m ² *4,99m) + (6,24m ² *19,55m) + (1,30m ² *0,22m) + (3,60m ² *5,47m)/2 + (9,17m ² *11,60m) + (2,81m ² *6,65m) + (7,16m ² *11,60m) + (3,80m ² *11,39m) + (2,89m ² *10,13m)/2 + (1,63m ² *1,26m) + [3,14*(1,26m) ² *(90/360)] =
= 20,76mq + 121,99mq + 0,29mq + 9,85mq + 106,37mq + 18,69mq + 83,06mq + 43,28mq + 14,64mq + 2,06mq + 1,24mq =
= 422,23 mq

<p>commitente</p> <p>FRANCESCO NOVARA - GIULIA MARISA NOVARA - GIOVANNA GIUDICI</p> <p>VIA del GIGANTE n. 28 - 20025 - LEGNANO</p>		1810	
<p>oggetto</p> <p>PIANO DI RECUPERO di immobile sito In VIA VITTORIA ang. VIA MARCONI 20025 LEGNANO MI FG 23 MAPP 106 E 107</p>		<p>data emissione 25.09.2018</p> <p>aggiornamenti</p>	
<p>tavola</p> <p>STATO DI FATTO: PIANTE ESISTENTE ED INDIVIDUAZIONE SLP ESISTENTE CALCOLI ANALITICI</p>		<p>A</p> <p>02b</p> <p>scala 1:200</p>	
<p>il progettista</p> <p>il direttore dei lavori</p> <p>il costruttore</p> <p>il committente</p>			
<p>www.micheleangelofere.it</p> <p>INGEGNERE MI 12343 ARCHITETTO MI 4290</p> <p>VIA PALESTRO 4 - 20025 LEGNANO MI</p> <p>tel 0331 547014 - fax 0331 485071 - studi@angelofere.it</p>			